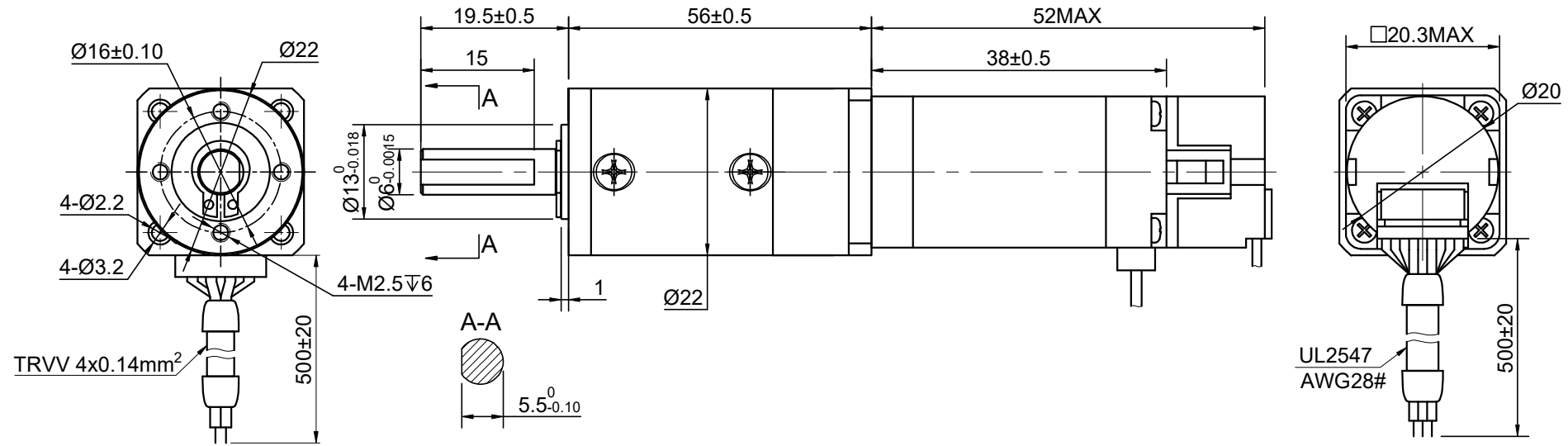


MODEL NO. 8HS15-0604D-E1000-EGS100 DWG NO. A4511

REV.	REVISION RECORD	BY	DATE
0	ORIGIN	ZPJ	3.23.2026

CUSTOMER'S MODEL: NO MODEL
END COVER COLOR: BLACK



SPECIFICATION	CONNECTION	BIPOLAR
AMPS/PHASE		0.60
RESISTANCE/PHASE(Ohms)@25°C		8.30±10%
INDUCTANCE/PHASE(mH)@1KHz		2.20±20%
HOLDING TORQUE w/o GEARBOX(Nm)[lb-in]		0.02[0.18]
STEP ANGLE(°)		1.80
STEP ACCURACY(NON-ACCUM)		±5.00%
GEAR RATIO		100
EFFICIENCY		90%
BACKLASH@NO-LOAD(arcmin)		<=25
MAX.PERMISSIBLE TORQUE(Nm)[lb-in]		6.00[53.10]
MOMENT PERMISSIBLE TORQUE(Nm)[lb-in]		12.00[106.20]
SHAFT MAXIMUM AXIAL LOAD(N)		100
SHAFT MAXIMUM RADIAL LOAD(N)		300
AMBIENT TEMPERATURE		-10°C~50°C[14°F~122°F]
INSULATION CLASS		B 130°C[266°F]
TEMPERATURE RISE		MAX.80°C

COMMENT:
1.TMBF 6000h OR MORE @ 24V/300RPM
2.INSULATION RESISTANCE (NORMAL TEMPERATURE AND HUMIDITY): 100 Mohm
3.DIELECTRIC STRENGTH 500VAC FOR 1MIN.(BETWEEN THE MOTOR COILS AND THE MOTOR CASE)

STEPPER MOTOR
8HS15-0604D-E1000-EGS100
S/N: XXXXXXXXXXXX



MOTOR CONNECTION			
PIN NO	BIPOLAR	LEADS	WINDING
1	A+	BLK	
2	A-	GRN	
3	B+	RED	
4	B-	BLU	

ENCODER RESOLUTION:1000PPR(4000CPR)									
LEAD COLOR	RED	BLK	WHT	BLU	GRN	BRN	YEL	PUE	THICK BLACK
DESCRIPTION	VCC	GND	EA+	EA-	EB+	EB-	EZ+	EZ-	SHIELD

FULL STEP 2 PHASE-Ex.,WHEN FACING MOUNTING END (X)					CCW	CW	DIMENSIONS ARE IN MILLIMETERS. TOLERANCES AS BELOW: DECIMALS ANGLES X ±0.5 ±2° X.X ±0.25 X.XX ±0.13
STEP	A+	B+	A-	B-			
1	+	+	-	-			
2	-	+	+	-			
3	-	-	+	+			
4	+	-	-	+			

STEPPERONLINE®

GEARED STEPPER MOTOR

8HS15-0604D-E1000-EGS100

THIS DOCUMENT SHALL NOT BE REPRODUCED NOR SHALL THE INFORMATION CONTAINED HEREIN BE USED BY OR DISCLOSED TO OTHERS UNLESS EXPRESSLY AUTHORIZED IN BY WRITING STEPPERONLINE.

SIGNATURE		DATE
DRN	ZPJ	3.23.2026
APVD	LDJ	3.23.2026

REV.	0	SCALE	1:1.5	DWG NO.	A4511
------	---	-------	-------	---------	-------