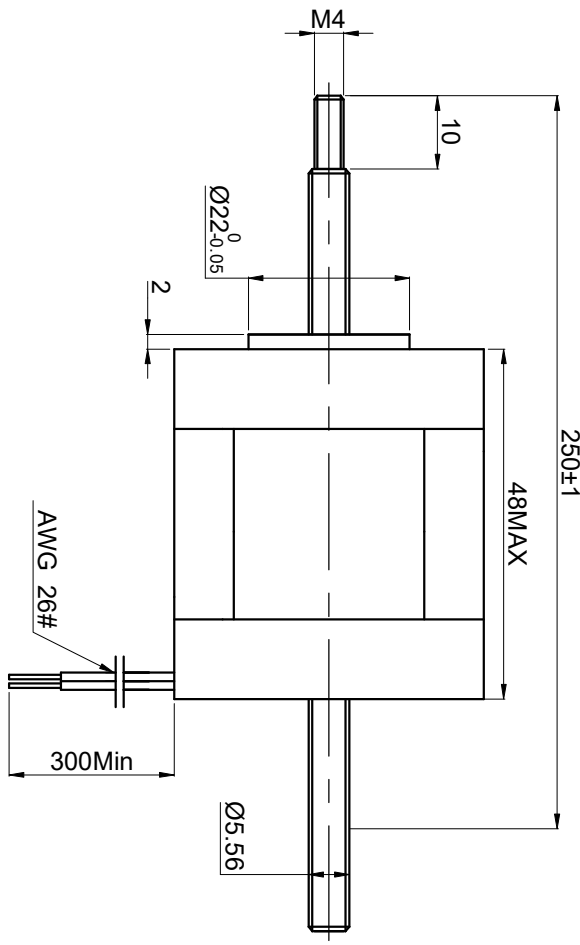
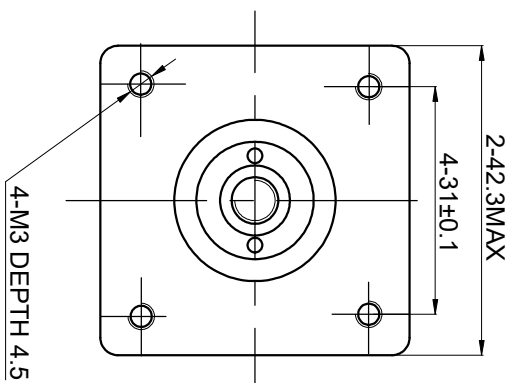


5885V ON GMD SR05Z-F3JF092S61N1 ON TEGOM

CUSTOMER'S MODEL: NO MODEL
END COVER COLOR: BLACK

REV.	REVISION RECORD	BY	DATE
0	ORIGIN	MYX	3.4.2026



SPECIFICATION	CONNECTION
AMPS/PHASE	BIPOLAR 2.60
RESISTANCE/PHASE(Ohms)@25°C	0.90±10%
INDUCTANCE/PHASE(mH)@1KHz	1.33±20%
HOLDING TORQUE(Nm)[Ib-In]	0.52[4.60]
STEP ANGLE(°)	1.80
STEP ACCURACY(NON-ACCUM)	±5.00%
LEAD(mm)	2.4384
LINEAR TRAVEL/STEP(mm)	0.012192
AMBIENT TEMPERATURE	-10°C~50°C[14°F~122°F]
INSULATION CLASS	B 130°C[266°F]
TEMPERATURE RISE	MAX.80°C
AMBIENT HUMIDITY	MAX.85%

COMMENT:
1. TMBF 6000h OR MORE @ 24V/3000RPM
2. INSULATION RESISTANCE (NORMAL TEMPERATURE AND HUMIDITY): 100 Mohm
3. DIELECTRIC STRENGTH 500VAC FOR 1MIN.(BETWEEN THE MOTOR COILS AND THE MOTOR CASE)

FULL STEP 2 PHASE-EX. WHEN FACING MOUNTING END (X)

STEP	A+	B+	A-	B-
1	+	+	-	-
2	-	+	+	-
3	-	-	+	+
4	+	-	-	+

CCW CW

DIMENSIONS ARE IN MILLIMETERS. TOLERANCES AS BELOW:

DECIMALS	ANGLES
X ±0.5	±2°
X X ±0.25	
X X X ±0.13	

THIRD ANGLE PROJECTION

LINEAR ACTUATOR
17N19S2604JE4-250RS
S/N: XXXXXXXXXXXXX



PIN NO	BIPOLAR	LEADS	WINDING
1	A+	RED	A+
2	A-	RED/WHT	A-
3	B+	GRN/WHT	B+
4	B-	GRN	B-

STEPPERONLINE®

STEPPER MOTOR

17N19S2604JE4-250RS

SIGNATURE	DATE	REV.	SCALE	DWG NO.	A5885
DRN MYX	3.4.2026	0	1:1		
APVD LJ	3.4.2026				